

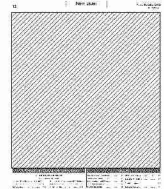
## Competitive Bond Offerings Compiled by Ipreo

\*Preliminary and subject to change. **SHADED LISTINGS ARE NEW.**

Issuer	St	Description	Amount (\$000s)	Time of Sale	Financial Adviser	Legal Opinion	Maturing	Insurer	Mdy's	S&P	Fitch	Bank-Qual.	Latest Details
<b>Thursday, December 13</b>													
Napa San Dt	CA	Certs of Part	*36,550	9:30 am P	KNN Public Finance	Stradling Yocca	13-32	—	—	AA-	—	—	Dec 6
Scott Co Pub Safety Auth	IA	Rev Ref	*8,140	10 am C	Springsted	Dorsey & Whitney	16-21	—	Aa2	—	—	BQ	Nov 19
Glencoe Vlg	IL	GO Ref	*8,550	10 am C	Ehlers	Chapman & Cutler	19-27	—	—	AAA	—	BQ	Dec 6
LaPorte	IN	GO	*4,750	11 am E	Urmbaugh	Barnes & Thornburg	13-32	—	—	A	—	BQ	Dec 6
Nineveh-Hensley-Jackson Sch Corp	IN	GO	*2,000	1 pm E	Therber & Brock	Ice Miller	13-15	—	—	—	—	BQ	Dec 11
Everett	MA	GO Ref	*2,440	11 am E	First Southwest	Edwards Wildman	13-22	—	Aa3	—	—	BQ	Dec 11
Westwood (Town)	MA	GO Muni Purp Loan	4,635	11 am E	FirstSouthwest	Edwards Wildman	13-22	—	—	AA+	—	—	Dec 7
North Oaks	MN	GO Imp Ref	555	10:30 am C	Springsted	Briggs & Morgan	14-23	—	—	—	—	BQ	Nov 13
Vineland	NJ	Gen Imp	*12,290	11:15 am E	Cumberland Advisors	McManimon Scotland	14-23	—	—	AA	—	—	Nov 29
<b>P</b> Albany County	NY	Energy (Tax)	1,600	12 pm E	Capital Markets Adv	Hodgson Russ	13-21	—	—	AA	—	—	Dec 10
<b>P</b> Albany County	NY	GO	64,575	11:30 am E	Capital Markets Adv	Hodgson Russ	13-24	—	—	AA	—	—	Dec 7
Canandaigua	NY	GO Pub Imp	8,131	11:30 am E	Bernard P. Donegan	Harris Beach	13-31	—	Aa3	—	—	BQ	Dec 3
Cincinnati Ctrl SD	NY	Sch Dist	570	11 am E	Bernard P. Donegan	Hiscock & Barclay	14-17	—	—	—	—	BQ	Dec 6
Dutchess County	NY	Pub Imp	10,671	11 am E	Capital Markets Adv	Orrick Herrington	13-32	—	—	—	—	—	Dec 6
Greece Ctrl SD	NY	Sch Dist	*2,200	11:30 am E	Municipal Solutions	Timothy R. McGill	13-26	—	—	—	—	—	Dec 6
Herkimer Vlg	NY	GO	2,487	11 am E	Fiscal Adv & Mkt	Harris Beach	13-26	—	—	A	—	BQ	Dec 10
New Hyde Pk Vlg	NY	Road	1,300	11 am E	Munisiat Services	Hawkins Delafield	13-25	—	—	—	—	BQ	Dec 7
Wyandanch UFSD	NY	Sch Dist (Tax)	*15,550	11 am E	NYMAC	Orrick Herrington	14-27	—	—	A	—	—	Dec 6
Delaware	OH	GO	6,415	11 am E	Sutsina & Assoc	Squire Sanders	13-22	—	Aa2	—	—	BQ	Dec 11
Tulsa Pub Facs Auth	OK	Cap Imp (Tax)	9,480	10:30 am C	Municipal Official	Hilborne & Weidman	13-18	—	Aa2	—	—	—	Dec 5
Greater Texoma Util Auth	TX	Rev	3,720	9:30 am C	Specialized Pub Fin	Fulbright & Jaworski	13-33	—	—	A+	—	BQ	Dec 5
Poolville ISD	TX	Unltd Tax	*1,260	10 am C	Southwest Securities	Fulbright & Jaworski	13-31	PSF	—	AAA	—	BQ	Dec 7
Tomball	TX	GO Ref	6,415	12 pm C	FirstSouthwest	Bracewell & Giuliani	14-23	—	—	AA-	—	BQ	Dec 7
Alpine SD BOE	UT	GO Sch Bldg Ref	*65,205	9:30 am M	George K. Baum	Chapman & Cutler	15-30	—	Aaa	—	—	—	Dec 6
<b>Monday, December 17</b>													
Decatur	GA	GO Sales Tax	*5,270	12 pm E	Public Fin Mgmt	Murray Barnes	15-17	—	Aa1	—	—	BQ	Dec 12
Waverly	IA	GO (Tax)	700	10 am C	Public Fin Mgmt	Ahlers & Cooney	15-20	—	—	—	—	—	Dec 6
Albertville	MN	GO Ref (Tax)	*2,510	10:30 am C	Northland Securities	Kennedy & Graven	16-25	—	—	—	—	BQ	Dec 12
Farmington	MN	GO Imp Ref	5,580	10 am C	Ehlers	Dorsey & Whitney	15-22	—	—	AA-	—	BQ	Nov 30
Pequot Lakes ISD#186	MN	GO Sch Bldg	8,175	11 am C	Ehlers	Knutson Flynn	23-35	—	—	—	—	BQ	Dec 6
Winona	MN	GO Wtr Ref Rev	*1,745	10 am C	Springsted	Briggs & Morgan	15-19	—	—	—	—	BQ	Nov 26
Orange County	NC	GO Ref	*13,870	11 am E	Davenport	Sanford Holshouser	14-24	—	Aa1	AAA	AAA	—	Dec 12
Moore	OK	GO	3,675	2 pm C	BOSC	Phillips Murrah	15-20	—	—	—	—	BQ	Dec 10
West Chester Area SD	PA	GO	*8,645	11:15 am E	Public Fin Mgmt	Rhoads & Sinon	13-20	—	—	—	—	BQ	Today
Magnolia	TX	Wtr & Swr Rev Ref	*4,475	1:30 pm C	Coastal Securities	Andrews Kurth	13-36	—	—	—	—	BQ	Today
Cascade Wtr Alliance	WA	Wtr Sys Rev	*42,810	8:30 am P	SDM Advisors	Foster Pepper	14-38	—	Aa2	AA+	—	—	Dec 7

**POS** This monitor signifies the Notice of Sale is available on [www.bondbuyer.com](http://www.bondbuyer.com)

**P** A letter 'P' signifies that a link to the POS is on the Bond Buyer Online's Competitive Bond Offering Calendar.



# THE BOND BUYER

Date: Thursday, December 13, 2012  
 Location: NEW YORK, NY  
 Circulation (DMA): 2,205 (1)  
 Type (Frequency): Magazine (D)  
 Page: 12,13  
 Section: Main  
 Keyword: Butler, Snow, O'Mara, Stevens and Cannada

\*Preliminary and subject to change. SHADED LISTINGS ARE NEW.

Issuer	St	Description	Amount (\$000s)	Time of Sale	Financial Adviser	Legal Opinion	Maturing	Insurer	Mdy's	S&P	Fitch	Bank-Qual.	Latest Details
Racine USD	WI	GO Ref	*10,000	10 am C	Robert W. Baird	Quarles & Brady	23-28	—	Aa3	—	—	BQ	Dec 12
<b>Tuesday, December 18</b>													
St Petersburg	FL	Pub Util Rev	*38,090	10:45 am E	Public Fin Mgmt	Bryant Miller	14-42	—	Aa2	—	AA	—	Dec 7
St Petersburg	FL	Pub Util Ref Rev	*39,525	11 am E	Public Fin Mgmt	Bryant Miller	14-33	—	Aa2	—	AA	—	Dec 7
<input type="checkbox"/> P Coweta Co Wtr & Swrg Auth	GA	Rev Ref	*29,795	11 am E	Kidwell & Company	Alston & Bird	13-40	—	—	—	—	—	Dec 12
Randolph Ctrl Sch Corp	IN	GO	105	11 am E	Umbaugh	Ice Miller	13	—	—	—	—	BQ	Today
Burgin ISD Fin Corp	KY	Sch Bldg Rev	*1,005	11 am E	Ross Sinclair	Steptoe & Johnson	13-32	—	—	—	—	BQ	Dec 12
Kentucky Assn of Cos Fin Corp	KY	Rev	*2,775	11:30 am E	Civic Fin Advisors	Peck Shaffer	14-38	—	—	AA-	—	BQ	Today
Provincetown (Town)	MA	GO Muni Purp Loan	*7,870	11 am E	Cape Cod 5 Cents Svg	Edwards Wildman	13-41	—	—	—	—	BQ	Dec 11
Gagebic Co Comm Coll Dt	MI	Comm College	835	1:30 pm E	Michigan MAC	Thrun Law Firm	13-22	—	—	—	—	BQ	Dec 10
Faribault County	MN	GO Ref	*8,095	10 am C	Public Fin Mgmt	Dorsey & Whitney	14-28	—	—	—	—	BQ	Dec 11
Shafer	MN	GO Ref	*1,330	10 am C	Ehlers	Kennedy & Graven	13-26	—	—	—	—	BQ	Nov 29
Raymore	MO	GO Ref	*9,365	11 am C	Piper Jaffray	Gilmore & Bell	14-27	—	Aa2	—	—	BQ	Dec 12
Carrboro (Town)	NC	GO	4,600	11 am E	Local Govt Comm	Sanford Holshouser	14-32	—	—	—	—	BQ	Dec 10
Berne Knox Ctrl SD	NY	Sch	*9,980	11 am E	Fiscal Adv & Mkt	Hiscock & Barclay	13-25	—	—	—	—	BQ	Today
Jefferson Ctrl SD	NY	Sch Dist	*99	11 am E	Fiscal Adv & Mkt	Lemery Greisler	13-17	—	—	—	—	BQ	Dec 12
Schenectady County	NY	Var Purp	4,627	11 am E	Munistat Services	Hodgson Russ	14-23	—	—	—	—	—	Dec 12
Cumru Twp	PA	GO	*2,875	11:15 am E	Concord Pub Fin Adv	Georgeadis Setley	13-25	—	—	—	—	BQ	Dec 7
Harris-Fort Bend Co MUD #1	TX	Unltd Tax	1,585	10 am C	FirstSouthwest	Schwartz Page	23-30	—	—	A	—	BQ	Dec 11
<b>Wednesday, December 19</b>													
Clay Co SD Fin Corp	KY	Sch Bldg Ref Rev	*5,120	11 am E	Ross Sinclair	Steptoe & Johnson	13-25	—	—	—	—	BQ	Dec 12
Community Fire Prot Dt	MO	GO	1,800	10 am C	Rogan & Associates	Stolar Partnership	13-32	—	Aa2	—	—	BQ	Dec 12
Waveland	MS	GO	1,500	4 pm C	Govt Consultants	Butler Snow	13-22	—	—	—	—	BQ	Dec 11
Chester UFSD	NY	Sch Dist Ref	*25,340	11 am E	Capital Markets Adv	Orrick Herrington	14-31	—	—	—	—	—	Today
<b>Thursday, December 20</b>													
West Travis Co MUD #8	TX	Unltd Tax	2,200	12 pm C	Specialized Pub Fin	McCall Parkhurst	15-37	—	—	—	—	BQ	Dec 11
<b>Tuesday, January 8</b>													
Lindbergh Schools	MO	GO Ref	*3,685	10 am C	WM Fin Strategies	Gilmore & Bell	14-16	—	—	—	—	BQ	Today
<b>Wednesday, January 9</b>													
Espanola Pub SD #55	NM	GO Sch Bldg	9,900	11 am M	Hutchinson Shockey	Modrall Sperling	13-26	—	—	—	—	BQ	Dec 5
<b>Thursday, January 10</b>													
Winona ISD #861	MN	GO Cap	1,580	10 am C	Ehlers	Dorsey & Whitney	14-28	—	—	—	—	BQ	Today
<b>Tuesday, January 15</b>													
Elk River Econ Dev Auth	MN	GO Ref	9,965	11 am C	Ehlers	Kennedy & Graven	18-33	—	—	—	—	BQ	Dec 12
<b>Wednesday, January 23</b>													
Woodbury	MN	GO Ref	*6,585	10 am C	Ehlers	Kennedy & Graven	16-27	—	—	—	—	—	Today
Woodbury	MN	GO Tax Abate	*16,845	10 am C	Ehlers	Kennedy & Graven	16-35	—	—	—	—	—	Today
Washington	WA	GO Ref	*300,000	—	Seattle-Northwest	Foster Pepper	—	—	—	—	—	—	Today
Washington	WA	GO Ref	*700,000	—	Seattle-Northwest	Foster Pepper	—	—	—	—	—	—	Today
<b>Day to Day</b>													
Florida Bd of Governors	FL	Fac Rev	*26,100	—	Division of Bond Fin	—	—	—	—	—	—	—	Dec 11
Florida Dept of Transp	FL	Turnpike Rev	*293,720	—	Division of Bond Fin	Greenberg Traurig	13-42	—	Aa3	AA-	AA-	—	Nov 30